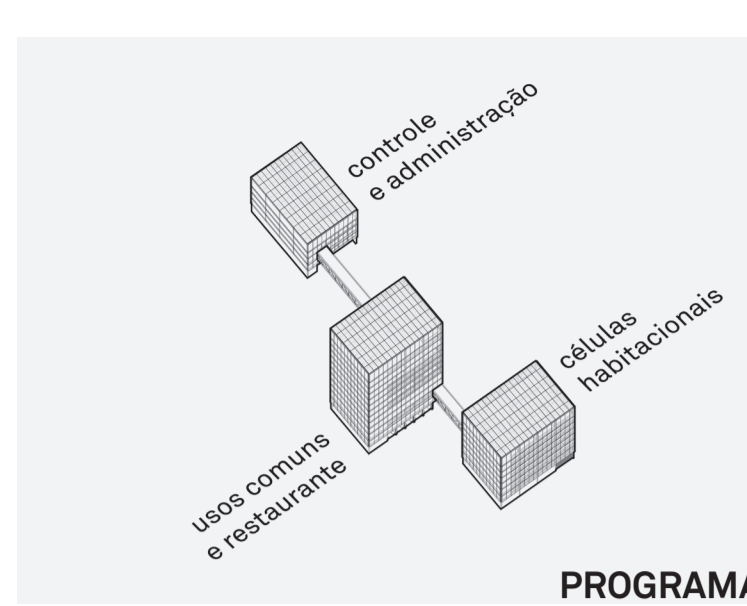
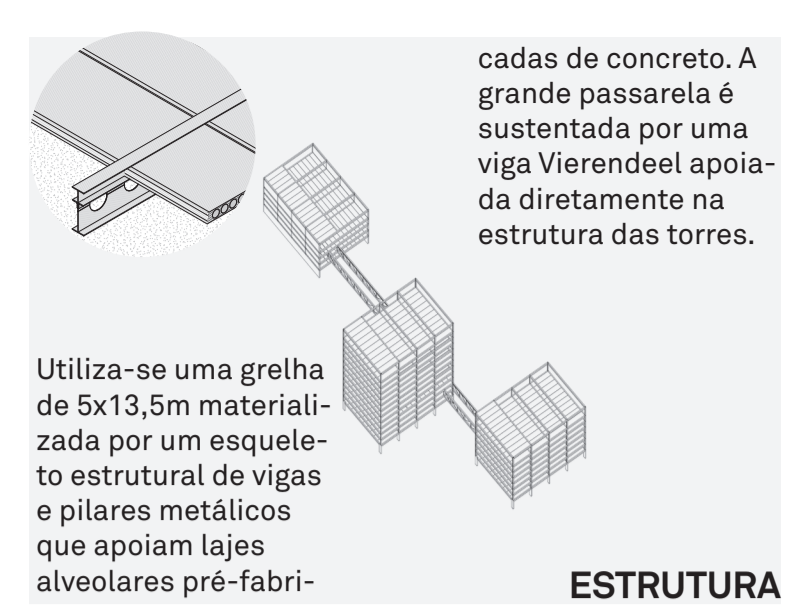


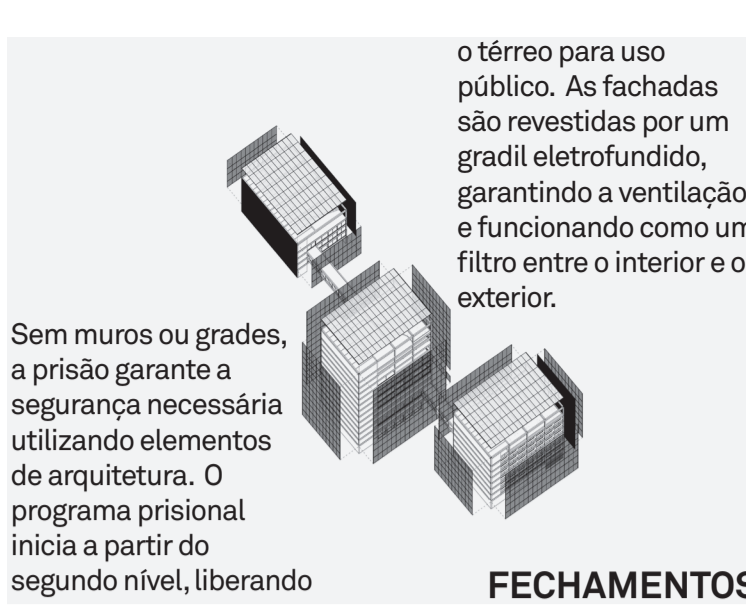
TERRENO



PROGRAMA



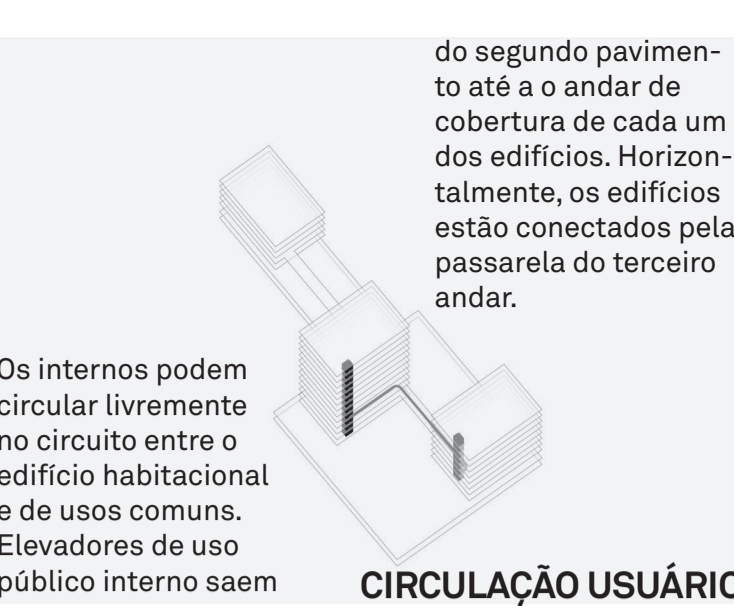
ESTRUTURA



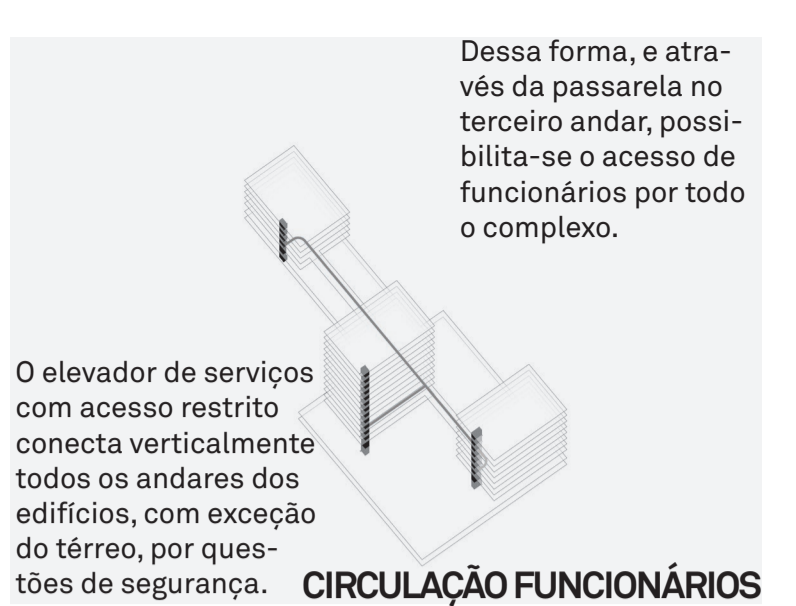
FECHAMENTOS



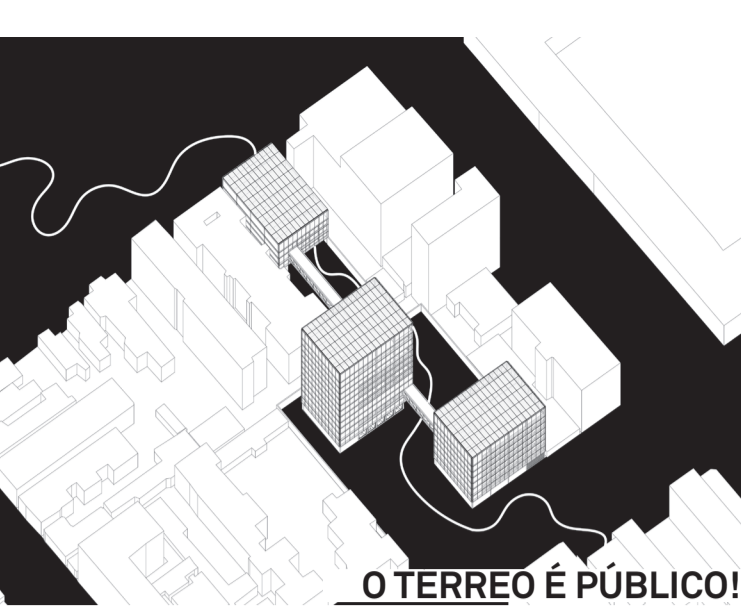
ACESSO CONTROLADO



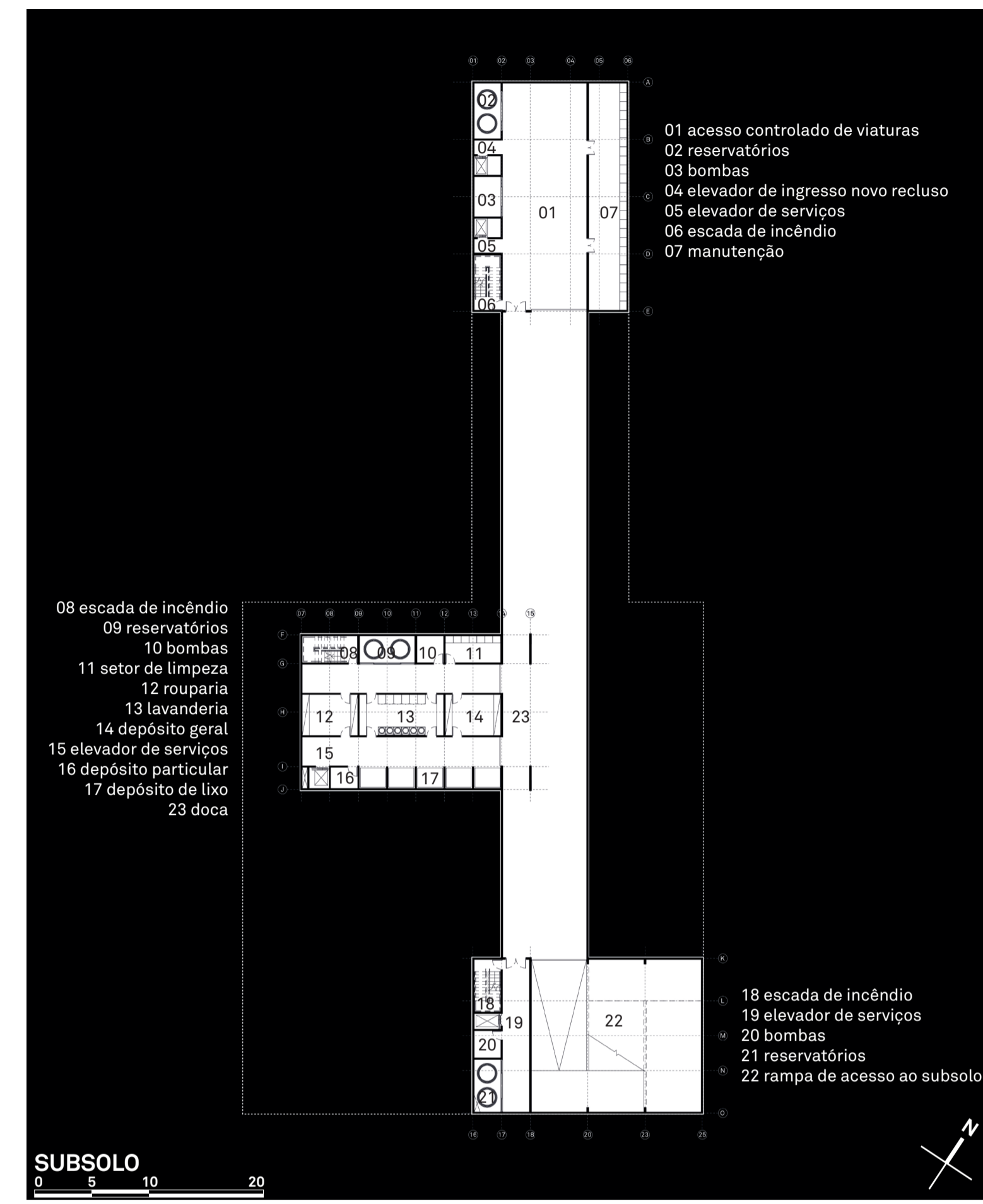
CIRCULAÇÃO USUÁRIO



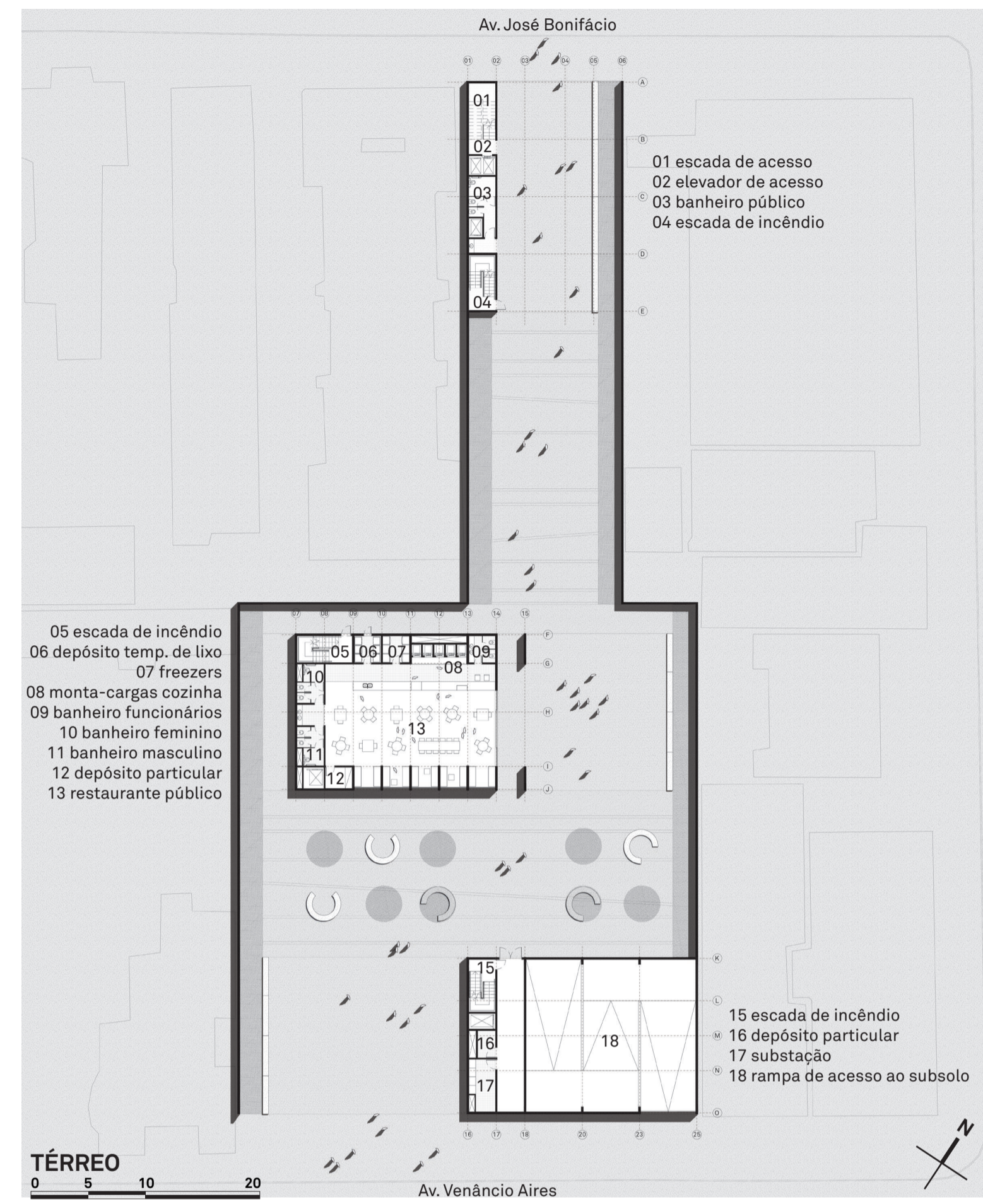
CIRCULAÇÃO FUNCIONÁRIOS



O TERRENO É PÚBLICO!



SUBSOLO



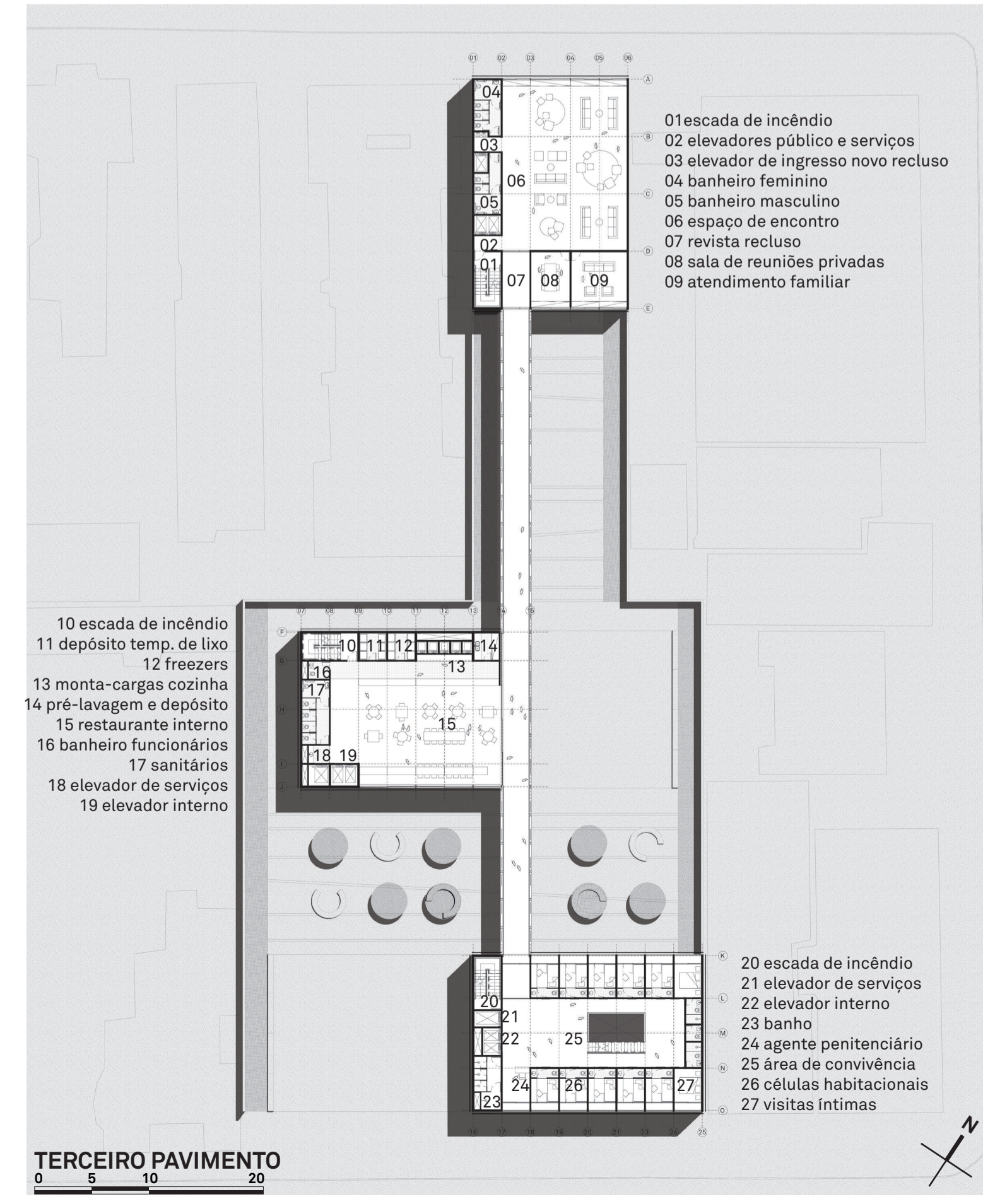
TÉRREO



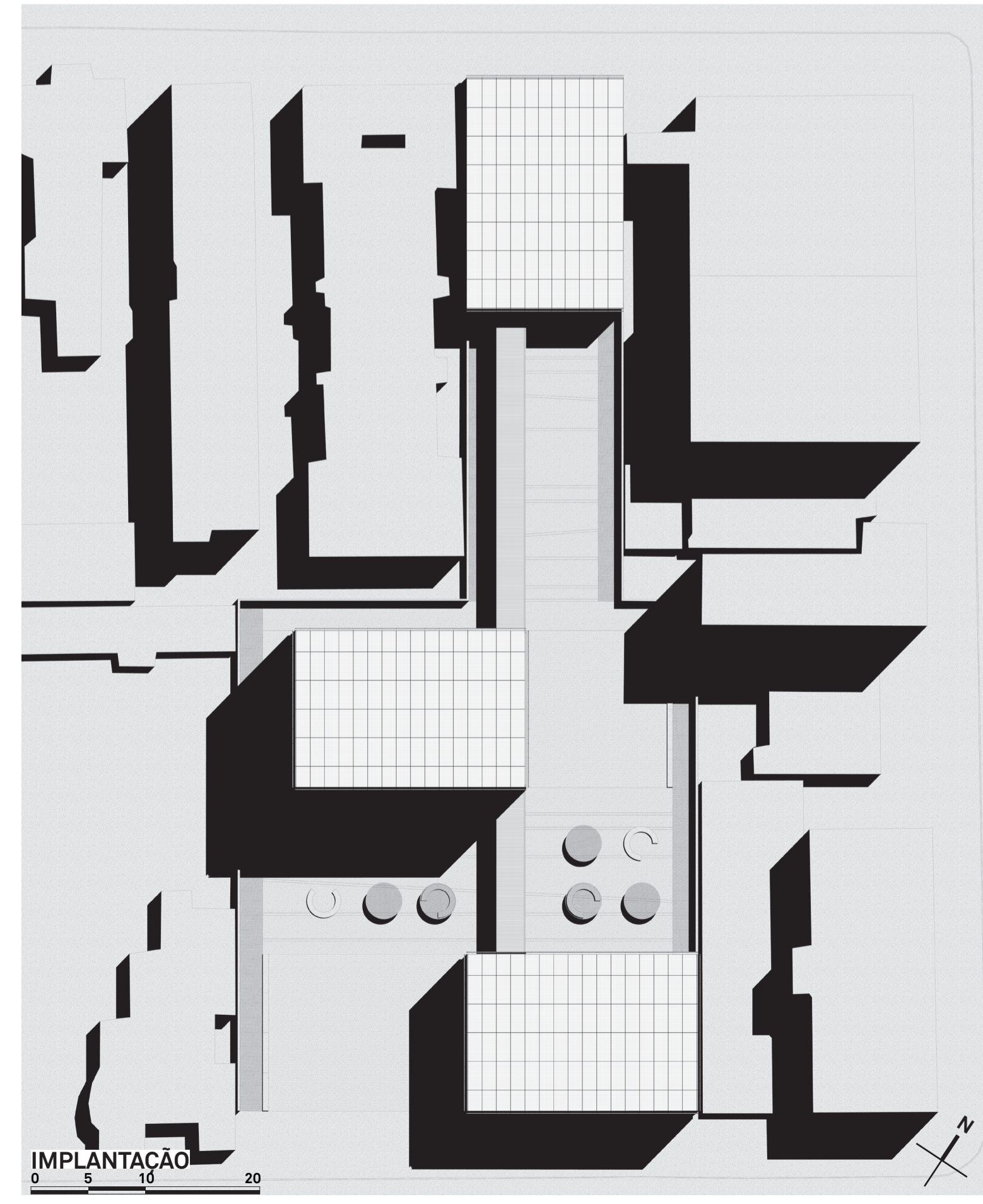
VISTA DO EDIFÍCIO DESDE O PARQUE



VISTA DO EDIFÍCIO DESDE O PARQUE



TERCEIRO PAVIMENTO



IMPLANTAÇÃO



VISTA DA CONEXÃO COM A PASSARELA



VISTA DO EDIFÍCIO DESDE O PARQUE



VISTA DESDE O INTERIOR DA CÉLULA



VISTA DO RESTAURANTE PÚBLICO

PRÊMIO IAB RS 2019  
 JOSÉ ALBANO VOLKMER

# 2/4

INSTITUTO DE ARQUITETOS DO BRASIL - DEPARTAMENTO DO RIO GRANDE DO SUL