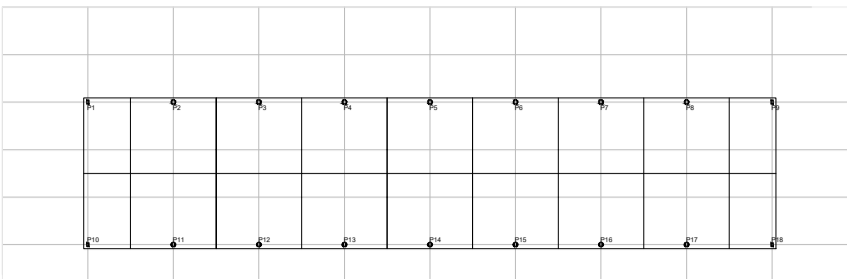


SISTEMA ESTRUTURAL

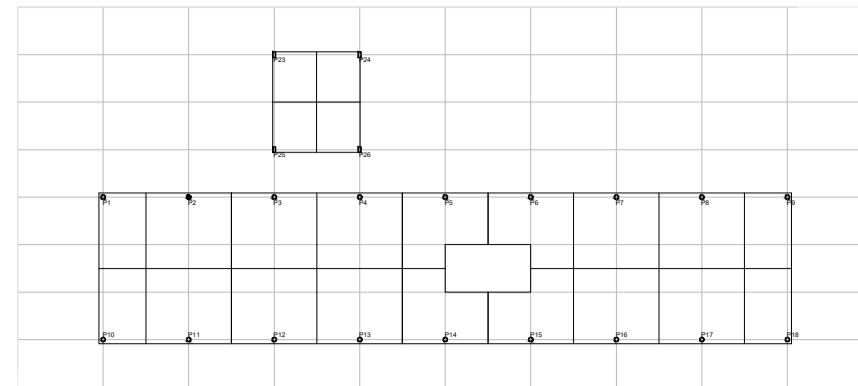


PLANTA BAIXA DOS TIPOS

Esc: 1/750

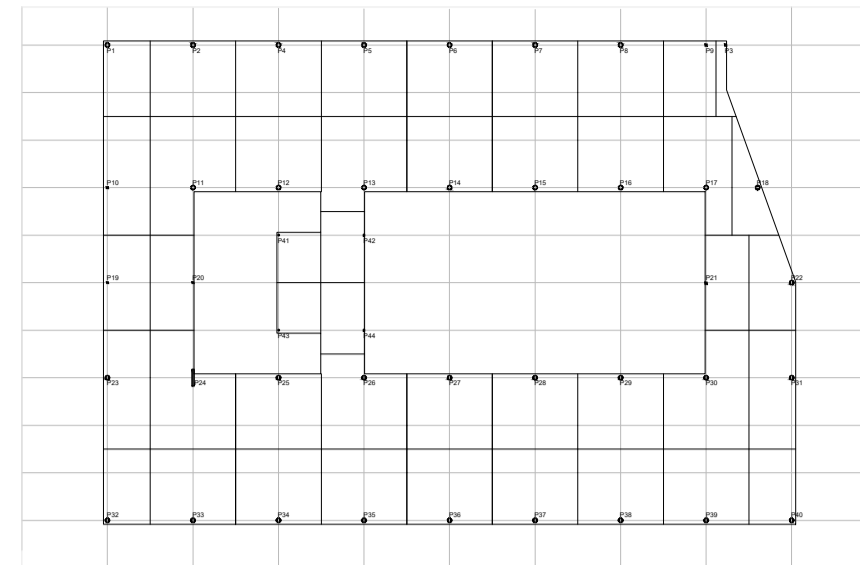
GRELHA

PARA O LANÇAMENTO DOS PILARES A MALHA ORIGINAL DE 5 X 9 FOI AJUSTADA PARA 15 X 9 PARA ATINGIR VÃO LIVRES ENTRE PILARES



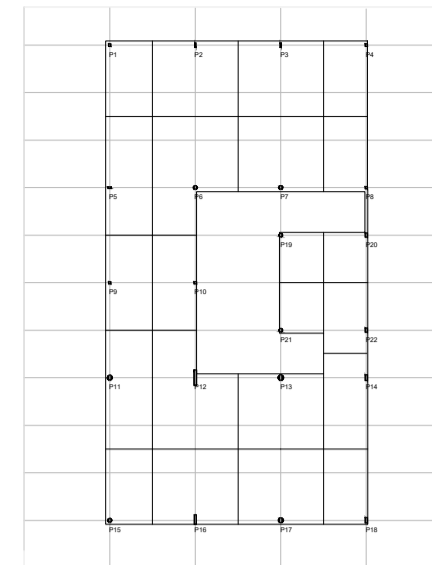
PLANTA BAIXA DOS PILOTIS

Esc: 1/750



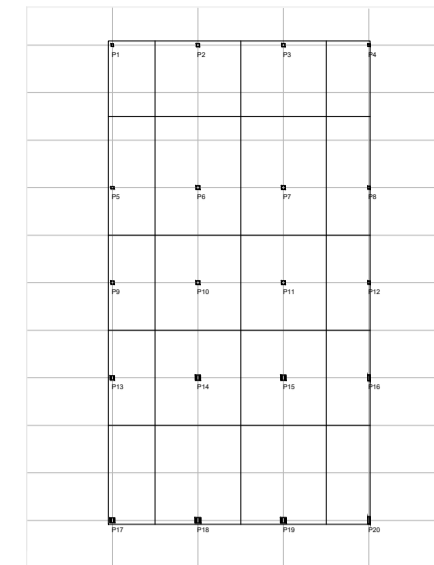
PLANTA BAIXA DO TÉRREO 2

Esc: 1/750



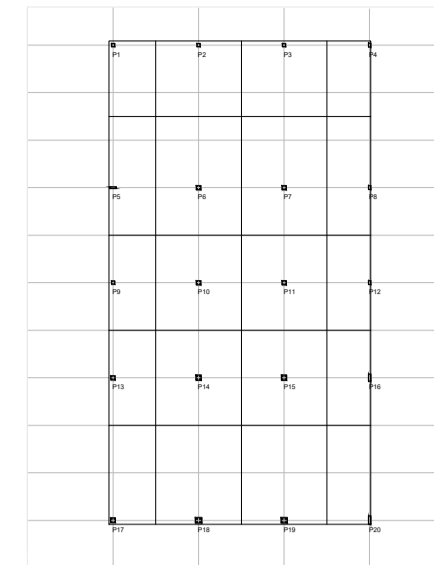
PLANTA BAIXA DO TÉRREO 1

Esc: 1/750



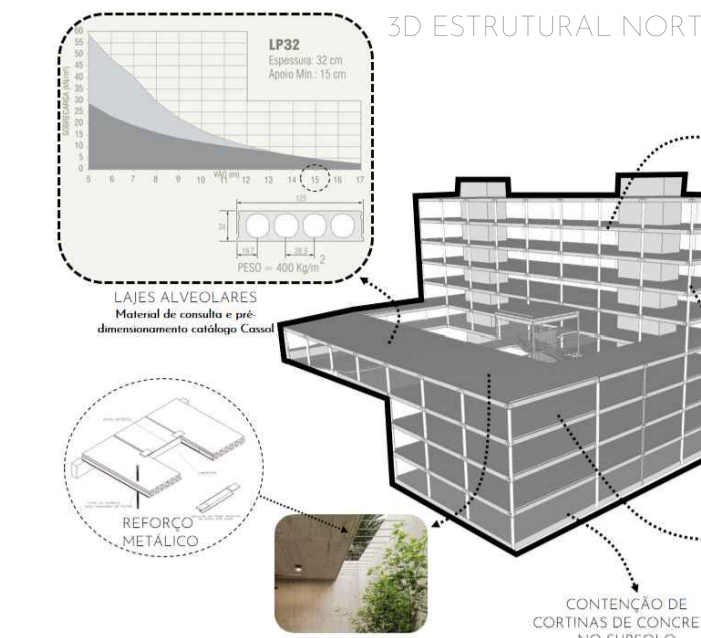
PLANTA BAIXA DO SUBSOLO 1

Esc: 1/750

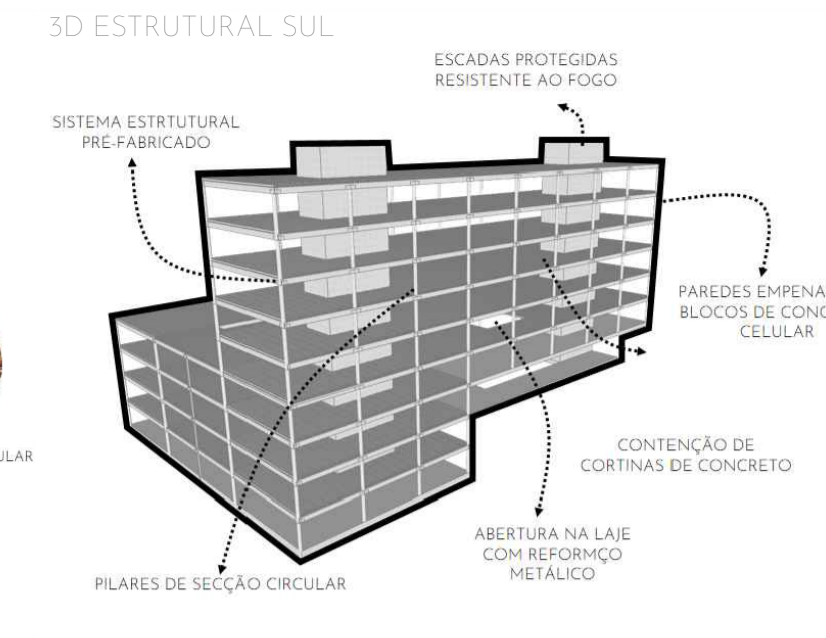


PLANTA BAIXA DO SUBSOLO 2

Esc: 1/750



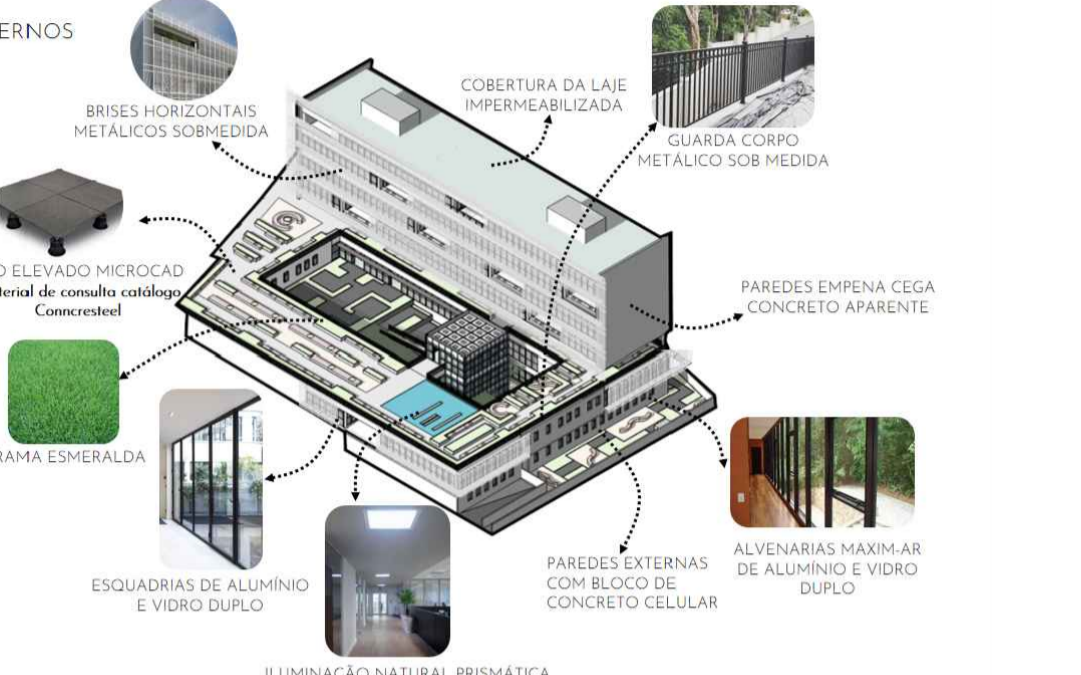
3D ESTRUTURAL NORTE



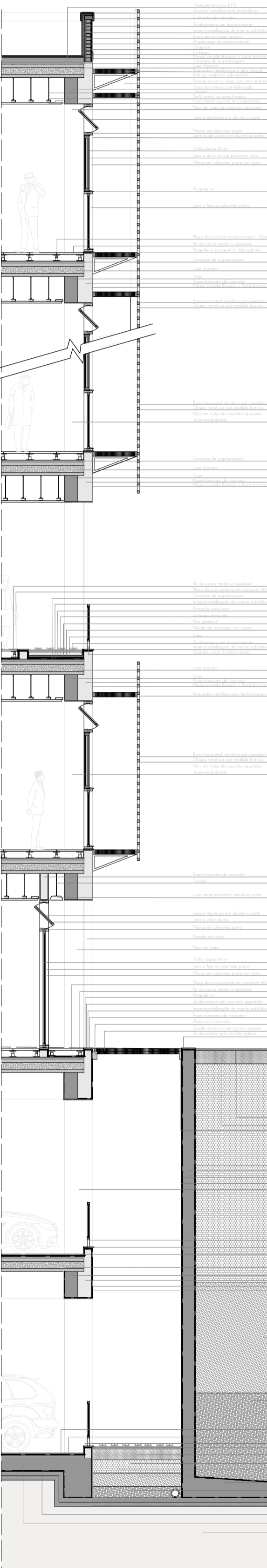
3D ESTRUTURAL SUL



AUTOMAÇÃO INTELIGENTE

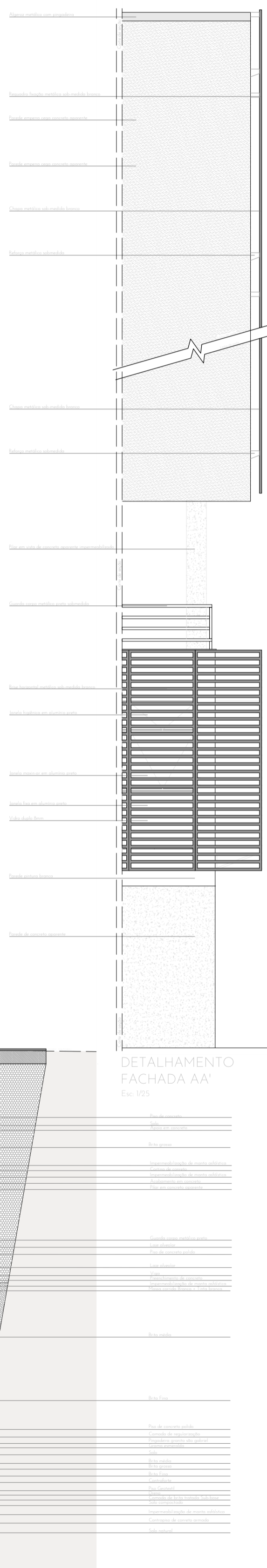


MATERIALIDADE



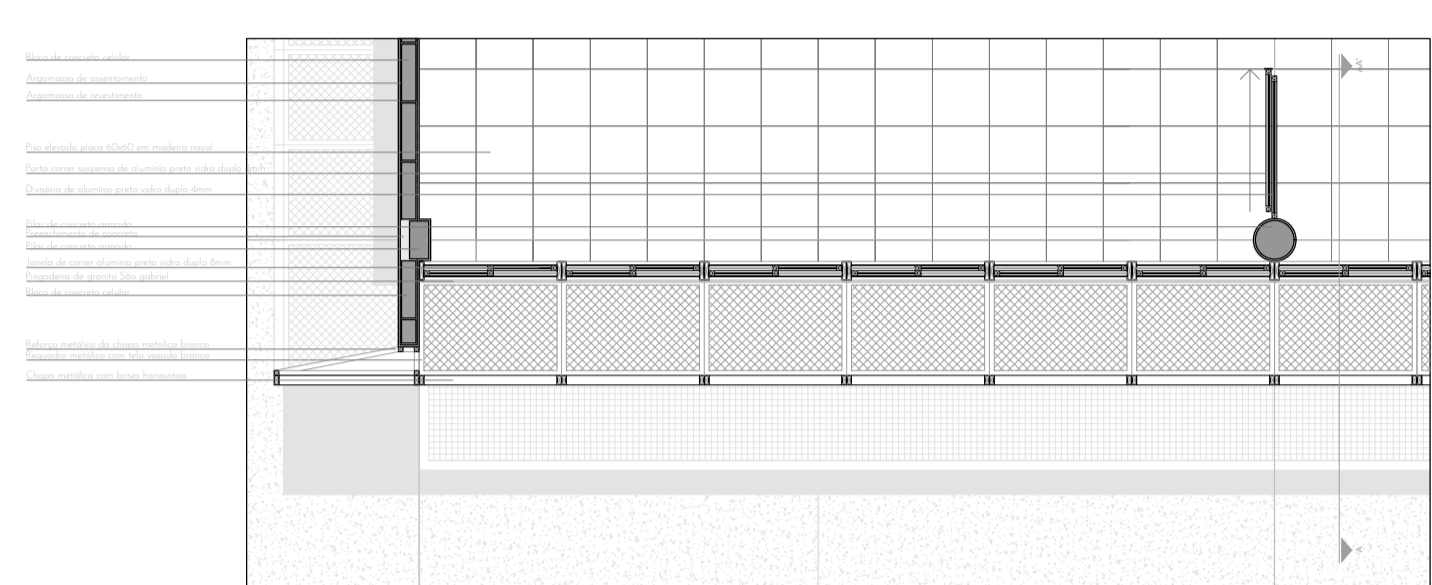
DETALHAMENTO CORTE AA'

Esc: 1/25



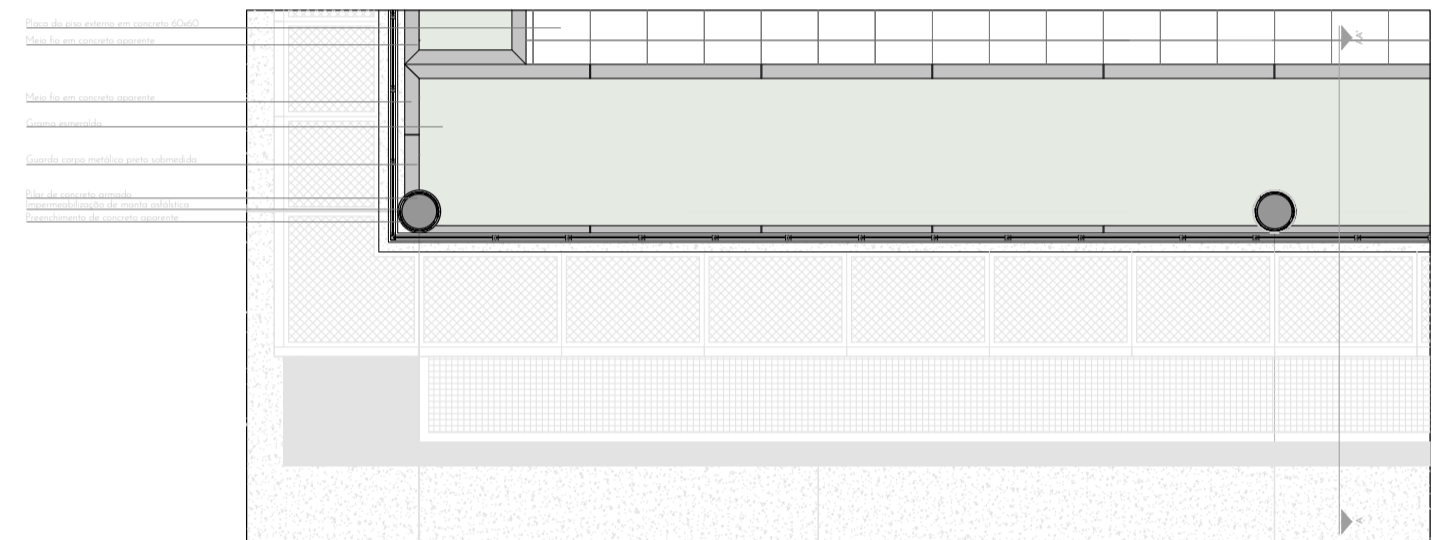
DETALHAMENTO FACHADA AA'

Esc: 1/25



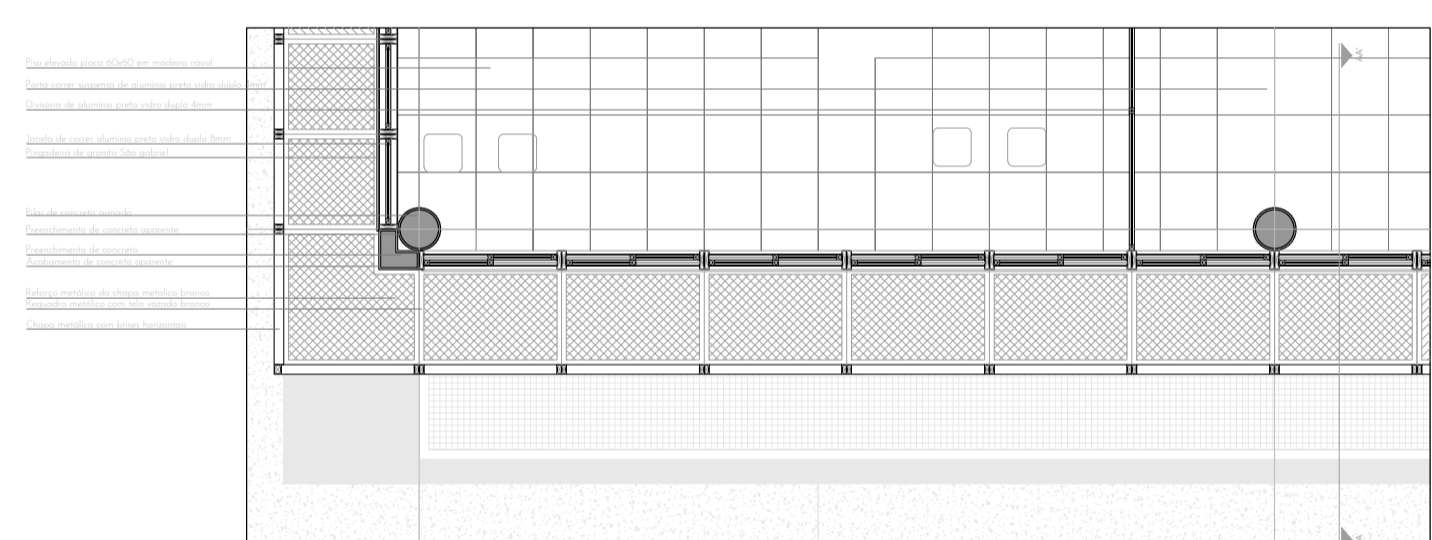
DETALHAMENTO PLANTA BAIXA TIPOS

Esc: 1/25



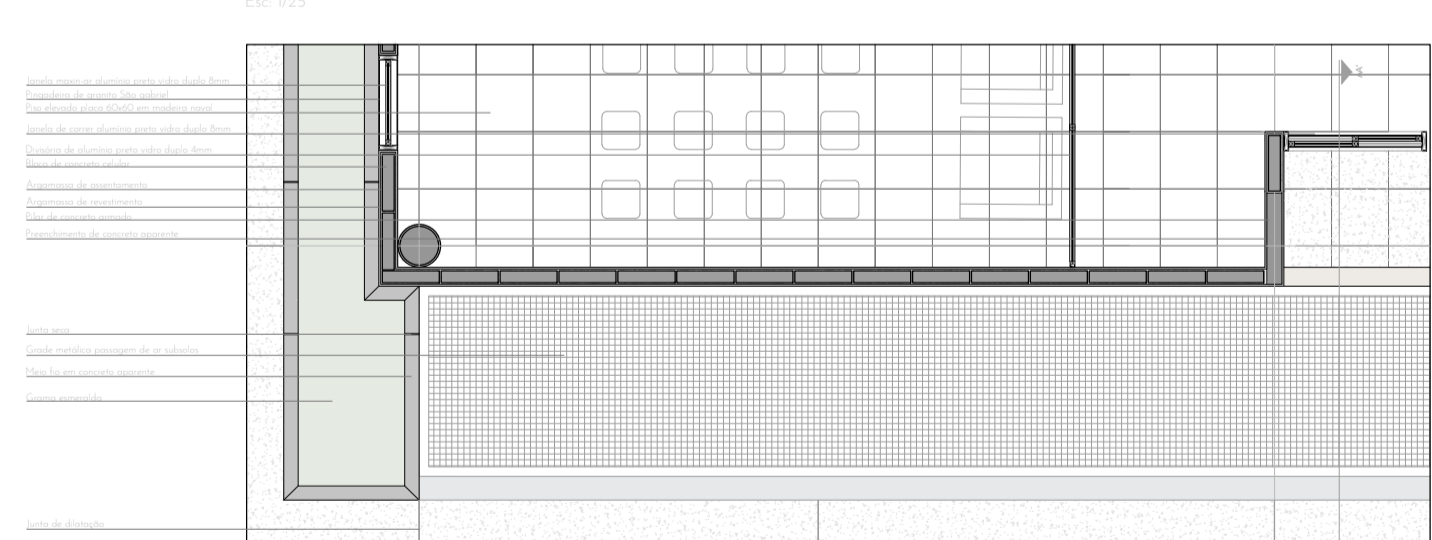
DETALHAMENTO PLANTA PAVIMENTO PILOTIS

Esc: 1/25



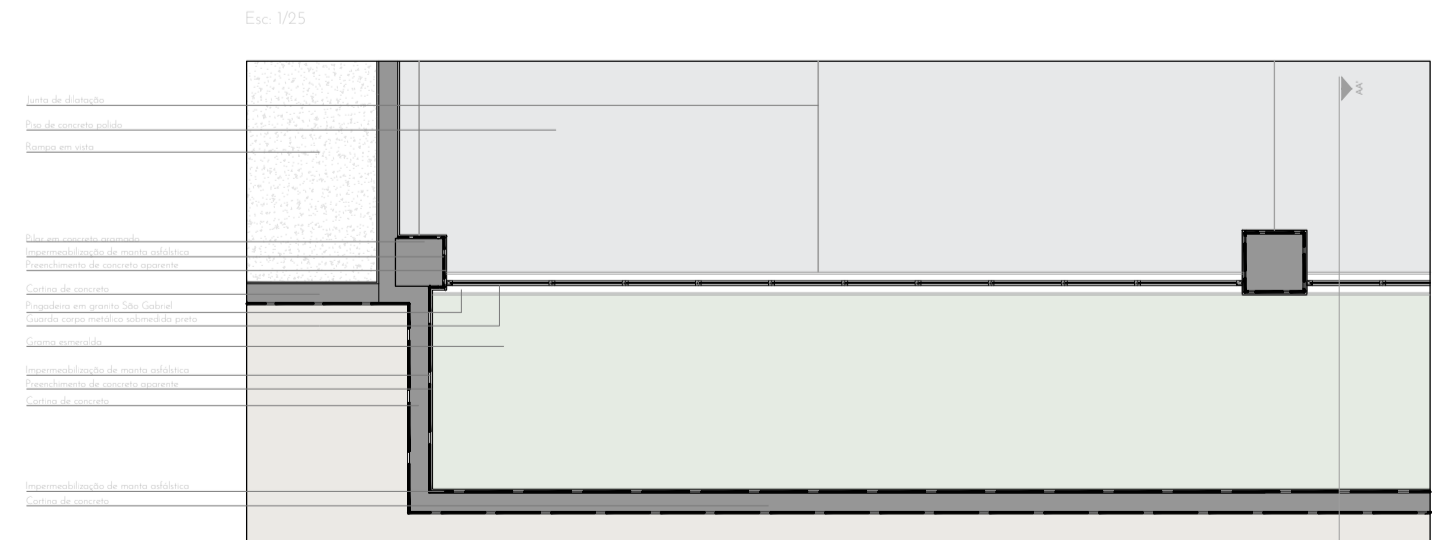
DETALHAMENTO PLANTA TÉRREO 2

Esc: 1/25



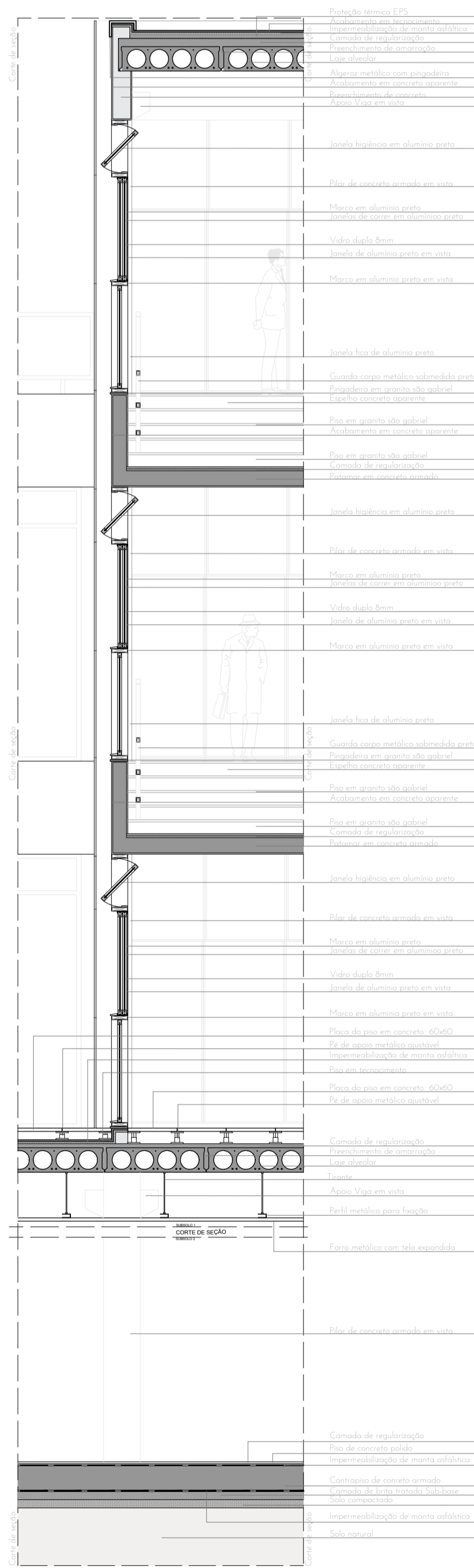
DETALHAMENTO PLANTA PAVIMENTO TÉRREO 1

Esc: 1/25



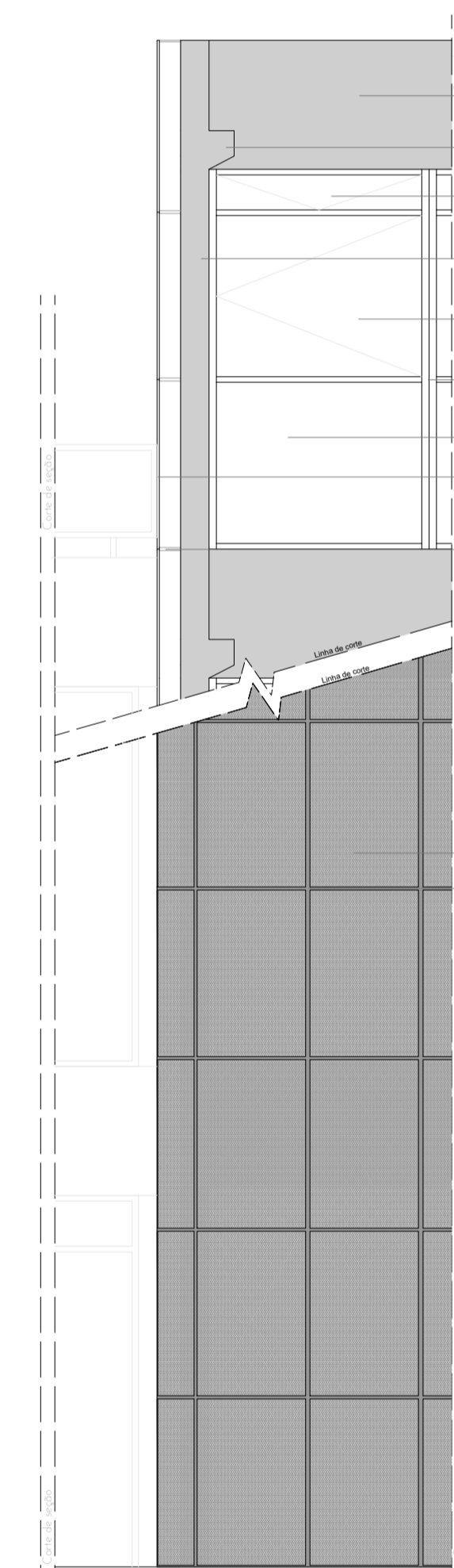
DETALHAMENTO PLANTA SUBSOLOS

Esc: 1/25



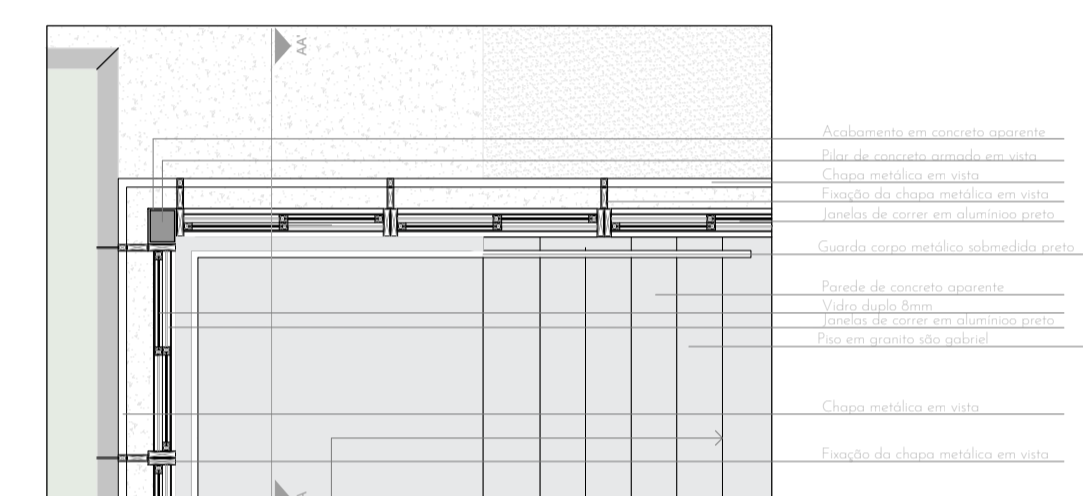
DETALHE CORTE AA'

Esc: 1/25



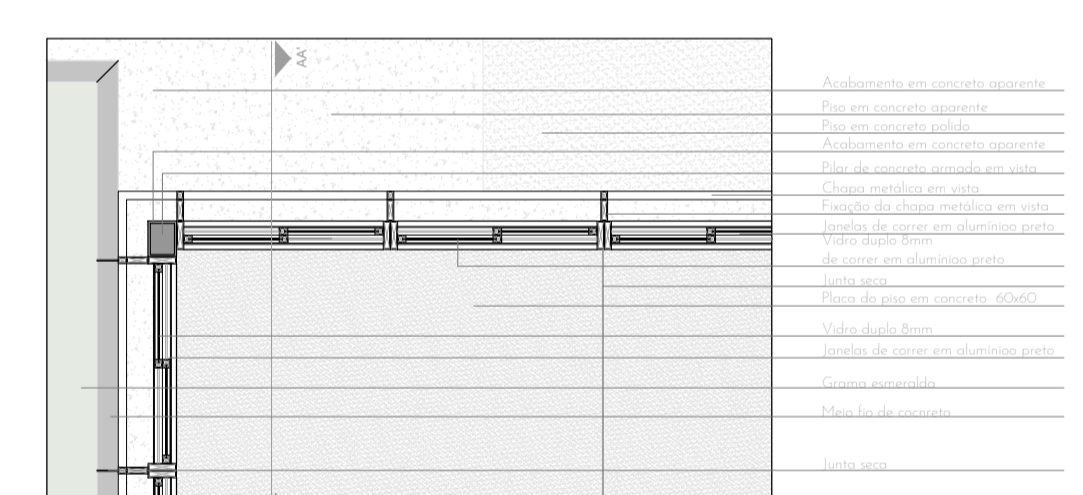
DETALHAMENTO FACHADA AA'

Esc: 1/25



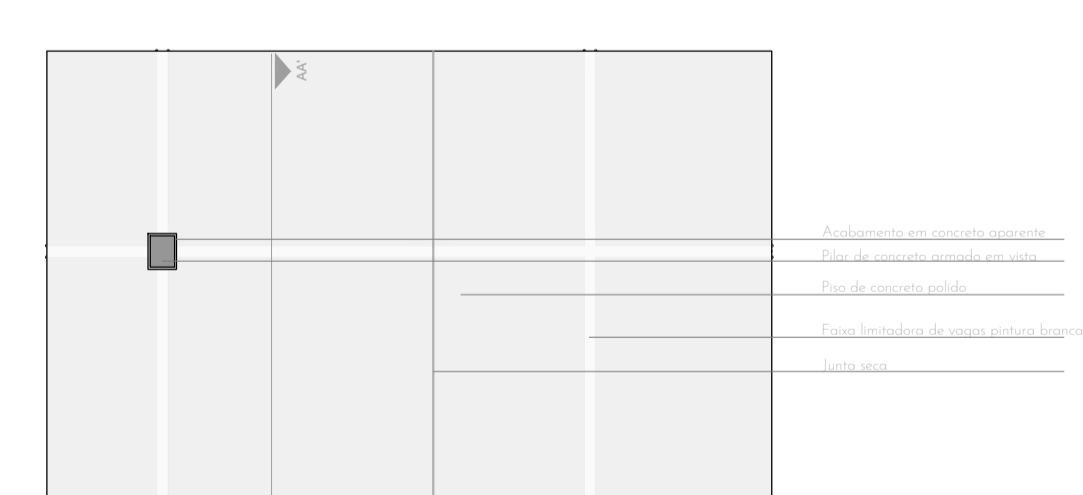
DETALHAMENTO PLANTA BAIXA TÉRREO 1

Esc: 1/25



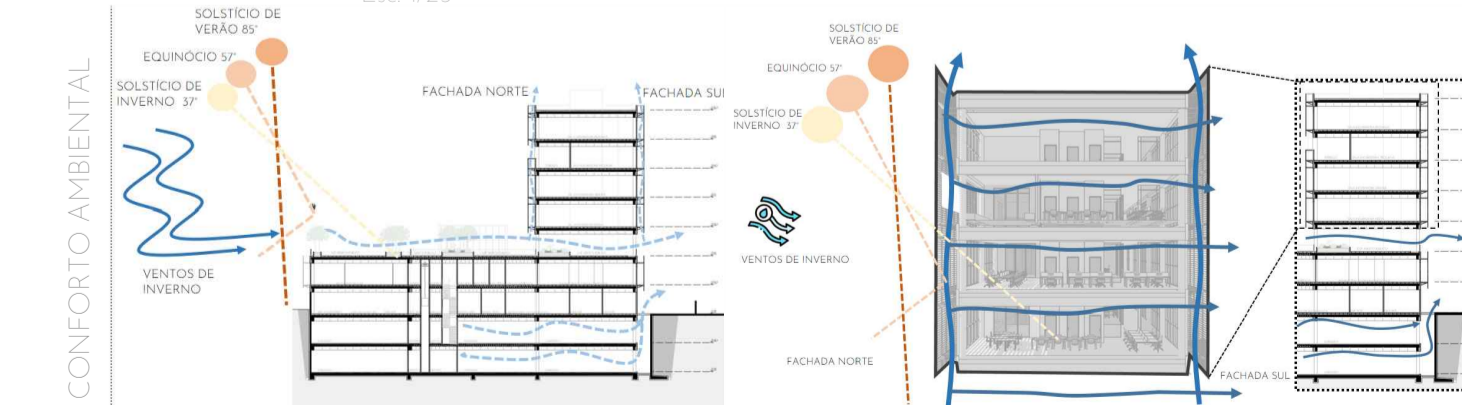
DETALHAMENTO PLANTA BAIXA TÉRREO 2

Esc: 1/25



DETALHAMENTO PLANTA BAIXA SUBSOLOS

Esc: 1/25



CONFORTO AMBIENTAL

PRÊMIO IAB RS - turmas 2022  
 JOSÉ ALBANO VOLKMER  
**4/4**  
 INSTITUTO DE ARQUITETOS DO BRASIL - DEPARTAMENTO DO RIO GRANDE DO SUL